




Navigating Global Migration Processes: Booklet for State Actors and Civil Society

On behalf of

giz Deutsche Gesellschaft
für Internationale
Zusammenarbeit (GIZ) GmbH



Federal Ministry
for Economic Cooperation
and Development



This information is provided by the Programme “Shaping development-oriented migration” (MEG). MEG is implemented by the Deutsche Gesellschaft für Internationale Zusammenarbeit (GIZ) GmbH on behalf of the German Federal Ministry for Economic Cooperation and Development (BMZ).

Published by:

Deutsche Gesellschaft für
Internationale Zusammenarbeit (GIZ) GmbH

Registered offices

Bonn and Eschborn, Germany

Programme

“Shaping Development-Oriented Migration” (MEG)

Dag-Hammarskjöld-Weg 1-5

65760 Eschborn, Germany

T +49 61 96 79-0

F +49 61 96 79-11 15

E info@giz.de

I www.giz.de

Editorial:

Paddy Siyanga Knudsen

Dr. phil. Songül Kayabasi

Marianne Haase

Programme „Shaping Development-Oriented Migration” (MEG)

Responsible:

David Nii Addy

Design/layout:

DIAMOND media GmbH, Neunkirchen-Seelscheid

Photo credits/sources:

GIZ

On behalf of

German Federal Ministry for Economic Cooperation and Development (BMZ)

GIZ is responsible for the content of this publication.

Eschborn, 2025

TABLE OF CONTENTS

FOREWORD	4
HOW TO USE THE BOOKLET:	5
A SPACE FOR DIALOGUE ON MIGRATION AND DEVELOPMENT – OVERVIEW OF GFMD	6
FIRST UN MIGRATION GOVERNANCE AGREEMENT – OVERVIEW OF GCM	7
HOW THE GFMD WORKS – DIALOGUE PROCESS	10
HOW THE GCM IS IMPLEMENTED – INSTRUMENT IN PRACTICE	13
WORKING GROUPS, SECRETARIATS AND CHAMPIONS – ENSURING GFMD EFFECTIVE DIALOGUE AND GCM INCLUSIVE IMPLEMENTATION	16
GCM ACTIVITIES – FINANCING AND STEERING LOCAL ACTION	20
MONITORING GCM IMPLEMENTATION – REVIEWING PROGRESS	22
TRACKING PROGRESS – TOWARDS ROBUST MEASUREMENT OF GCM IMPACT	25
STAY CONNECTED – CONTACT DETAILS	26



FOREWORD

This booklet serves as a practical guide to support state and civil society actors in navigating their engagement in two key global processes: the Global Forum on Migration and Development (GFMD) and the Global Compact for Migration (GCM), which include the Regional Migration Reviews (RMRF) and the International Migration Review Forum (IMRF). This concise information booklet offers a visual presentation of the interrelations between legislative frameworks and the thematic and practical connections between the GCM, as a UN instrument, and the GFMD.

The selection of these two global processes is based on:

- The growing need for stakeholders to understand the key elements and importance of migration governance discourse.
- The necessity of extending GCM planning, implementation, and monitoring beyond ministries charged with migration policy to include subnational state actors.
- Ensuring sustained and effective civil society participation in global dialogue spaces through the GFMD.
- Recognising civil society's role in migration governance by engaging in the policy framework and inclusive dialogue.

The booklet outlines key migration governance fora, their interactions, and entry points. It supports state and civil society actors in defining engagement strategies, fostering equitable partnerships, and advancing migration diplomacy through collective advocacy. The booklet serves all stakeholders but primarily targets state actors, local authorities, and civil society. It draws from official GFMD and GCM sources and complements them with civil society experiences to support stakeholders in navigating their engagement strategies.

This booklet is based on our implementation experiences in countries such as Ghana. The collaboration with governmental and civil society actors in these contexts provided the impetus for developing this booklet.

The booklet is part of GIZ's Global Programme "Shaping development-oriented migration" (MEG), which supports partner countries in leveraging the benefits of regular migration, engaging diaspora for sustainable development, and ensuring gender-responsive contributions to the GCM.

HOW TO USE THE BOOKLET:

This booklet is intended to support stakeholders with concise checklists to help navigate their engagement strategies in the context of the GFMD and GCM processes. While it does not provide an analysis of engagement practices or strategies, nor does it prescribe specific actions or advocacy plans, it serves as a practical tool to facilitate orientation and planning.

It is structured in a way that explains the dual existence and operationalisation of the GCM and GFMD processes.

Key tips and hints are included in sections:

- **Explore:** Encourages readers to dive into key elements of the frameworks.
- **Engage:** Provides action-oriented guidance for deeper exploration.
- **Entry Points:** Offers suggestions on how to engage with the various fora and spaces.

Additionally, the guide includes charts and infographics to familiarise readers with key visuals sourced from the official GFMD and GCM websites.



Elana Wong, Coordinator of the GFMD Civil Society Mechanism, sharing updates about the civil society preparatory process at the 2nd GFMD Preparatory Meeting, Geneva, February 2025.



A SPACE FOR DIALOGUE ON MIGRATION AND DEVELOPMENT – OVERVIEW OF GFMD

In 2007, the first meeting of the Global Forum on Migration and Development (GFMD) was held in Brussels. The GFMD is a voluntary, state-led, informal, and non-binding process that shapes the global debate on migration and development.

It was established following a proposal of UN Secretary-General Kofi Annan at the 2006 UN General Assembly High-Level Dialogue on International Migration and Development (HLD). Although not a UN process, it actively engages with the UN system.

The GFMD is chaired by a rotating host country (e.g. Colombia serves as a Chair for the 2024–2025 term) and is supported by a dedicated Secretariat. Since 2023, the GFMD Secretariat has replaced the former Support Unit and is hosted by the International Organisation for Migration (IOM), providing administrative and logistical support.

The governance structure includes a **Troika system** (comprising past, current and future chairs); a **Steering Group** composed of up to 30 country representatives, and the **Friends of the**

Forum, open to all Member States and GFMD observers, including non-state actors.

A key feature of the GFMD is its multi-stakeholder approach, facilitated through their self-organised mechanisms:

- GFMD Civil Society Mechanism (representing civil society, including diaspora and migrant organisations, as well as trade unions).
- GFMD Business Mechanism (engaging the private sector).
- GFMD Mayors Mechanism (bringing in local authorities).
- Youth Stakeholder Network (focusing on youth actors).

These mechanisms operate independently and are hosted by non-governmental organisations, ensuring diverse representation and engagement in migration governance.

FIRST UN MIGRATION GOVERNANCE AGREEMENT – OVERVIEW OF GCM

In 2018, representatives of 164 governments at the intergovernmental conference in Marrakech adopted the **Global Compact for Safe, Orderly and Regular Migration (GCM)**. This **non-legally binding** agreement became the first intergovernmental UN framework to establish a **common approach to international migration**. It aims to **promote safe, orderly and regular migration** through 10 guiding principles and 23 objectives.

The GCM is based on a whole-of-government and whole-of-society approach, aiming to address migration challenges while harnessing its

potential for sustainable development through inclusive and participatory processes.

To support Member States and stakeholders in implementing, monitoring and reviewing GCM progress, the UN has established the UN Migration Network on Migration (UNNM), coordinated by the IOM. The Network consist of an Executive Committee, working groups, and a secretariat. It reflects the UN's commitment to operationalising the GCM with a rights-based approach that prioritises the well-being of migrants within a unified UN system framework.



EXPLORE: GFMD framework

The [GFMD Operating Modalities](#) (updated in 2020) guide the internal arrangements of chairing, funding and technical support to the presiding chair. They also provide standards for GFMD engagement with subnational government authorities, UN system, civil society, private sector and youth.

Also available are the Terms of Reference ([ToRs](#)) for the GFMD Troika, Steering Group and the Friends of the Forum.

Forum Objectives

- Provide a platform for dialogue on the contribution of migration in development.
- Facilitate the exchange of knowledge and best practices.
- To promote international cooperation and partnerships.



Friends of the Forum.
Geneva, 2025.

The link between GFMD and GCM

1. The GFMD was the forerunner to the GCM, playing a key role in shaping discussions through dialogue and thematic exchanges (General Assembly Resolution 73/195).
2. The GCM explicitly calls on the GFMD to host an annual informal exchange on the GCM implementation, providing a platform for stakeholders to share best practices and innovative approaches for the IMRF.
3. The GCM is rooted in Universal Declaration of Human Rights (UDR) and the Agenda 2030.
4. The GFMD contributes to the 2030 Agenda through its annual report to the High-Level Political Forum on Sustainable Development (HLPF).
5. The GFMD is a space for constructive dialogue on international migration between states through a multistakeholder process.
6. Not all GFMD Member States are signatories to the GCM, and both processes remain non-binding.
7. Through flexible arrangements, GFMD chairs establish sub-committees, facilitate dialogue, and provide feedback to the GCM Forum (e.g., UNNM meetings, IMRF).



HOW THE GFMD WORKS – DIALOGUE PROCESS

EXPLORE: PREPARATORY EVENTS AND THE SUMMIT

Friends of the Forum

Open to all member states and GFMD observers, the Forum meetings are held in Geneva (and/or hybrid) and are convened by the Chair and guided by a predefined agenda. Invitations are managed through the GFMD Secretariat. These meetings provide an opportunity for updates on GFMD governance, working groups and consultations. Any deliverables from the roundtables are shared and discussed to shape to inform the Summit's agenda. Technical and financial allocations are also addressed. Representatives of all mechanisms participate by presenting their reports and addressing their issues raised by their constituencies.

Roundtable Consultations

Open to all member states, GFMD observers and invited members of respective mechanisms, the roundtables have become a key platform for in-depth discussions on thematic topics. Depending on the format, they provide the space for deliberation on pressing challenges faced by migrants, opportunities to leverage on efforts of actors outside of

STATE ACTORS EAGER TO PARTICIPATE?

- Contact your GFMD focal point in Permanent Mission in Geneva and other thematic leads.
- Contact the GFMD secretariat to offer support as Working Group/Round Table co-chair.
- Proactively participate in the Friends of the Forum and Roundtable Consultations.
- Submit your policy and/or practice.
- Join a GFMD Working Group.

government systems and the exchange of best practices that shapes innovative partnerships. These meetings are currently held in Geneva (and/or hybrid) and are guided by the co-chairs and support system.

Thematic Working Groups (WGs)

The WG “Sustainable Development Agenda 2030” and the WG on narratives linked to migration are standing committees co-chaired by Member States and mechanisms. Their agenda is aligned with the Chair’s priority areas, establishing a link to their thematic focus. Membership is on voluntary basis, regionally balanced and open to both state and non-state partners, including international organizations. The WGs engage with Troika and Steering Group.

The GFMD Summit: Objectives, Participation, and Hosting

Based on the outcomes of the preparatory meetings, roundtables, and working groups, the Chair defines the Summit’s objectives and invites all stakeholders, with priority given to states. The mechanisms play a key role in ensuring for civil society participation. The summit is usually held in the Chair’s home country, though there have been exceptions. As a high-level event, it attracts senior officials from governments, the UN system, civil society, academia, local/regional governments, youth and private sector engaged in migration and development.

CIVIL SOCIETY ENTRY POINTS

- Connect and join collective advocacy efforts through your civil society regional network.
- Contact GFMD civil society mechanism to learn more about the official and civil society engagement processes.
- Engage with co-chairs of RT and WGs to share your inputs on thematic interests.
- Engage with your national and subnational governments on thematic interests.
- Submit your practice during the call for Platform for Partnerships.

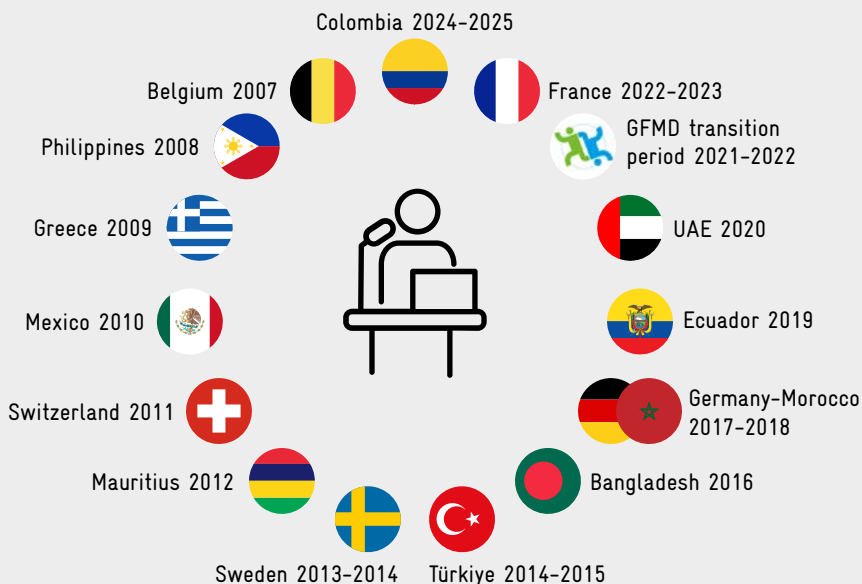
Thematic focus and format of the dialogue:

The GFMD

The chair determines the thematic focus of the dialogue process upon expressing their interest. Through consultation with Member States (and non-government actors), the Chair gathers feedback on shaping the priority areas, which serve as the foundation for Government-led Roundtables (RT). The Chair also

defines the format and deliverables in the consultation/roundtables as well as the Summit agenda and outcomes. The infographic of past Chairs below shows that various countries, both from the Global North and Global South, have taken on the role of Chair. The GFMD secretariat (hosted by IOM) supports the Chair in fulfilling its strategic functions. Any Member State or mechanism can volunteer to co-chair a roundtable. Support mechanisms (e.g. penholder or facilitator) are determined internally by RT co-chair.

Infographic of past Chairs of GFMD



HOW THE GCM IS IMPLEMENTED – INSTRUMENT IN PRACTICE

Thematic focus and format

The GCM framework consists of 23 objectives, each linked to specific actions and aligned with the relevant SDGs. Adopting a comprehensive, 360-degree view of international migration, the GCM promotes a balanced approach aimed at maximising the benefits of migration while addressing risks and challenges for individuals and communities across countries of origin, transit, and destination. For example, GCM objective 5 (see below) includes 10 actions for Member States. This objective is also examined through the lens of the 10 cross-cutting principles (see graph above). The GCM objectives are co-dependent and interconnected.

The Member States define their national prioritisation plans through a multi-stakeholder platform. These plans are led by government entities and include input from civil society, the private sector, trade unions, diaspora actors, and youth actors. With the support of the UNNM Secretariat's capacity-building efforts, countries such as El Salvador, Ghana, Kenya, and Malawi have been assisted in developing GCM National Implementation Plans, following the guidance provided by UNNM workstreams.



ENHANCE AVAILABILITY
AND FLEXIBILITY
OF PATHWAYS FOR
REGULAR MIGRATION



Associated actions



ENGAGE: Beyond central government

Member states are exploring options to enhance GCM implementation and monitoring particularly through

- **Regional Consultative Processes and regional mechanisms:** several RCPs and mechanisms at regional level have aligned their strategies with GCM framework and participate in GCM reviews.
- **Continental collaboration:** the African Union launched its continental Plan of Action as an African blueprint for stakeholders to implement and monitor the GCM.

MIND THE GAP: An opportunity remains for more structured engagement of local government and local authorities in line with whole-of-government approach. This would include engaging actors in design, implementation, resourcing and monitoring of GCM at national level, regional and global level.

Migration Network Hub – Repository of practices

The Hub provides an online repository and space where all stakeholders can explore, connect and exchange knowledge to enhance GCM implementation. It also serves as a source of inspiration for local engagement strategies, advocacy efforts and community participation.

CIVIL SOCIETY ENTRY POINTS

- Connect with national coordination mechanism for GCM implementation.
- Connect and join collective advocacy efforts through your civil society regional network.
- Engage with your national and subnational governments on thematic interests.
- Volunteer to be a UN migration network hub reviewer.
- Submit your practice on UN migration hub.
- Contact Civil Society Action Committee.

ENGAGE: 14 thematic UNNM workstreams



United Nations
Network on Migration
Working Better Together

The workstreams are divided into two categories, each covering various thematic areas aligned with GCM implementation. The first category

includes new workstreams introduced after the 2022 IMRF in response to the IMRF Process Declaration. The second category consists of ongoing workstreams, which either support the Network's core function of assisting United Nations migration coordination mechanisms at the country and regional levels or focus on updated thematic priorities. Workstreams utilise GCM talks to showcase their progress and engage a broader range of stakeholders on their deliverables.



Members of the GIZ Programme „Shaping development-oriented migration“ (MEG) and members of CSOs from Cameroon and Ghana at the RMRF Africa Multistakeholder Hearing. Addis Ababa, 2024.



WORKING GROUPS, SECRETARIATS AND CHAMPIONS – ENSURING GFMD EFFECTIVE DIALOGUE AND GCM INCLUSIVE IMPLEMENTATION

The UN Network The UN Network supports Member States through its working groups and secretariat by

- **Capacity building and technical support** by providing workshops, consultations, mapping, and needs assessments to outline challenges, priorities, and concrete actions to accelerate GCM implementation.
- **Issues Positioning** by releasing statements on thematic issues, with calls to action for governments and keeping the public informed on the GCM process.
- **Convening stakeholders for consultation** on thematic topics and outputs of the Network (e.g. work-plan, guidance documents, thematic framework documents).
- **Coordination of multi-stakeholders' expertise** providing inputs on specific thematic areas through the UNNM workstreams and working groups.

The GCM Champion Countries and their role

Currently, 35 countries across various regions have voluntarily joined forces to enhance cooperation, mobilise support and exchange best practices. While a group of states was initially invited to serve as “[champion countries](#)”, the initiative is open for any Member State wishing to participate.

These countries receive targeted support and play a key role in helping the United Nations Network on Migration (UNNM) generate valuable insights, document lessons learned, and identify best practices. These insights are then shared in dedicated for and with other member states.

GCM Champion countries meet periodically and produce reports and issue joint statements, particularly on advancing human rights-based approach to migrants and strengthening the implementation of the GCM regional reviews and multilateral dialogue.

PLATFORM FOR PARTNERSHIPS (PfP)

Since 2010 at the 4th GFMD process, the GFMD has provided an online platform to facilitate the exchange of policies and practices among Member States and stakeholders. In addition to serving as a repository of new initiatives, the PfP creates space during the Summit for national and local governments, as well as non-state actors, to highlight state-of-the-art initiatives on migration and development. Contact Civil Society Action Committee.



Second preparatory meeting of the 2025 GFMD Summit. Geneva, 2025.

The GFMD Secretariat and its role

The GFMD Secretariat was established as a **permanent support structure** in January 2023. Prior to this, dedicated support had been provided on an ad-hoc basis.

The Secretariat's primary role is to provide logistical and administrative support to the GFMD. Hosted by the International Organization for Migration (IOM) in Geneva, it assists the GFMD Chair-in-Office, Troika and Steering Group in organising meetings and high-level summits. Additionally, it ensures effective liaison and information exchange among the GFMD stakeholders and Friends of the Forum. Beyond its organisational role, the Secretariat also supports the Chair in financial management and fundraising and is responsible for GFMD communications and data management.

ENGAGE: Civil Society Action Committee

Since 2016, the Action Committee has consolidated itself as a membership-based global platform for collective civil society coordination and engagement in global migration policy and governance, including advocacy. It aims to facilitate timely and strategic information-sharing, collective strategising and action, and to increase and democratise access for civil society engagement at all levels.

CIVIL SOCIETY ENTRY POINTS

- Explore options to engage in country-level GCM capacity building.
- Explore the events, GCM talks and outputs of UN workstreams.
- Look out for workstream membership calls.
- Engage with civil society in champion country of interest.
- Engage with your national and subnational governments on championing initiatives.
- Exchange views on champions' best practice and reports.
- Engage with Action Committee and GFMD civil society mechanism.



Members of the CSM. Abuja, 2023.

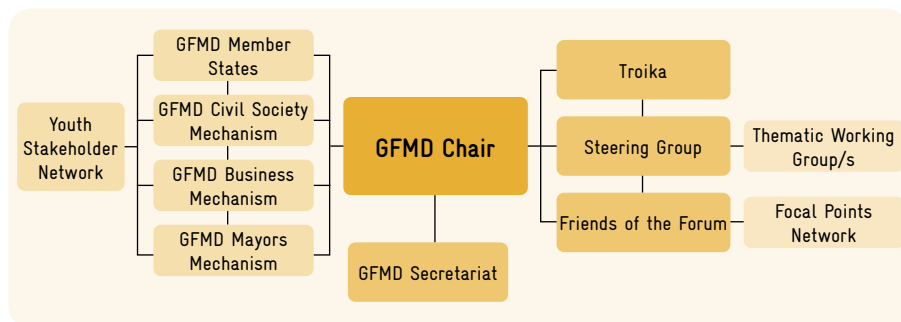
The GFMD Civil Society Mechanism (CSM)

The CSM serves as the coordination platform for civil society engagement in the GFMD. It brings together a diverse range of organisations to actively participate in the forum.

Since the Swiss Chairmanship in 2011, civil society's involvement in the GFMD has been self-organised. The Civil Society Coordinating Office, hosted by the International Catholic Migration Commission (ICMC), facilitates these efforts. The CMS's International Steering Committee (ISC) – comprising over 30 organisations and networks active in migration and development, guides CMS's work. Although the GFMD remains state-led, civil society plays a crucial role in the dialogue, offering perspectives from organizations worldwide.

ENTRY POINTS FOR GOVERNMENTS AND CIVIL SOCIETY

- Support the MPTF with a contribution to support its initiatives.
- Apply for MPTF funding. Local governments and civil society should collaborate with a member state to access the fund.
- Make a pledge on the UN Migration Hub's Dashboard to support migration related initiatives.
- Engage with GFMD Mayors' Mechanism to connect with local government representatives.
- Engage with Action Committee and GFMD civil society mechanism.



GCM ACTIVITIES – FINANCING AND STEERING LOCAL ACTION

This section explores financing mechanisms of the GCM and how stakeholders leverage various tools to support its implementation. Member States lead the process, with support from other stakeholders in financing and execution.



Financing the GCM

The M-MPTF is funded by contributions from various countries and focuses on five thematic areas. Open to all states, this is based on guiding principles, **360-degree vision**, collective and national ownership, and UN system coherence. As is the only pooled funding instrument for migration, it is governed by a multi-partner Steering Committee, chaired by the Director-General of the International Organization for Migration (IOM) as Coordinator of the UN Network on Migration (“the Network”).

The Steering Committee consists of 12 members, including three representatives from the UN Network, three donor countries, three countries of origin, transit and destination, and three stakeholders.

Member States, regional bodies, inter-governmental organizations, non-governmental organizations, businesses, foundations and individuals can make both earmarked and un-earmarked contributions. However, only Member States can apply for GCM funding, with partnerships encouraged and documented across broader stakeholders.



Local actors and civil society are encouraged to use the form on the website to support GCM implementation.

Reaffirming GCM support – Pledges



Member States and stakeholders can submit pledges to support GCM implementation. A pledge can be submitted individually or jointly, aligned with shared goals and may also mirror other Compact (e.g. GCR). Pledges can take various forms, including financial commitments, policy or legislative measures, process- oriented actions, in-kind contributions, or technical assistance. Each pledge must align with at least three GCM objectives and principles and is time-bound. Progress is tracked on the **UN Migration Hub's pledging dashboard**.

GFMD Mayors Mechanism



The Mayors Mechanism was established in 2018 during the 10th GFMD Summit to engage local and regional governments (LRGs). Its launch coincided with the Fifth Mayoral Forum Meeting. Co-chaired by United Cities and Local Governments (UCLG), the Mayors Migration Council (MMC) and the IOM. The Mayors Mechanism also co-chairs the GFMD Ad-Hoc Working Group on Public Narratives on Migration with the governments of Canada and Ecuador. Cities and local authorities are well positioned to contribute global, regional and national efforts in addressing migration governance challenges and driving local development solutions.



Second preparatory meeting of the 2025 GFMD Summit. Geneva, 2025.

MONITORING GCM IMPLEMENTATION – REVIEWING PROGRESS

The progress of the GCM is monitored through various processes at national, regional, and global levels.

National Review Processes

Each Member State defines its own monitoring and review mechanism for reporting on GCM progress. This includes preparing a Voluntary National Review report which is submitted to the UNNM.

Prioritisation and implementation plans also incorporate monitoring elements. While some states involve thematic experts from civil society and the youth to support in consultative processes, this is not the case everywhere. GCM implementation is coordinated through national UN migration networks, supported by the UN country team.

Regional Migration Review Forum (RMRF) – Understanding the process

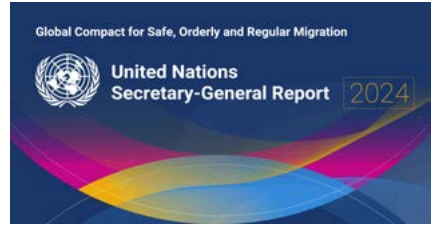


Every two years, regional reviews are organised by the regional commissions, under the jurisdiction of the [United Nations Economic and Social Council](#), UN Migration Network and continental body (e.g. African Union Commission). These reviews are state-led and bring together government representatives and stakeholders to discuss GCM progress in their respective regions.

Prior to each regional review, virtual consultations are held to gather inputs on the GCM thematic priorities. These consultations also address the challenges for and opportunities for accelerating GCM implementation. The agendas for the reviews are tailored to the specific regional context and focus.

While government participation is more flexible, civil society organisations participate through an endorsement process. This process ensures that a wide range of voices are included in the discussions. To support participation, limited funding is available for physical attendance, and some reviews are broadcast on UN WebTV. Self-mobilisation of civil society begins several months prior to regional reviews, facilitated by regional civil society networks. This gives CSOs the opportunity to prepare and contribute effectively to the review process.

UN Secretary-General reports



Every second year, the UN Secretary-General launches a report with progress, challenges and recommendations to advance GCM commitments and improve migration governance. Since 2020, the three biennial reports have key measures, with 2024 focusing on proposals on efforts to save lives and a proposal for GCM Indicators. This voluntary common framework will assist Member States in tracking progress, aligning policies with the 2030 Agenda and improving migration data.

Cities Network Meeting, GFMD 2024.



EXPLORE: Multi-stakeholder hearings prior to reviews

In the spirit of the whole-of-government and whole-of-society approach, the convenors host back-to-back pre-IMRF sessions where various stakeholders from the GCM ecosystem deliberate on their perspectives regarding of GCM implementation. These sessions bring together government officials, the UN system, civil society, trade unions, diaspora actors, youth, academia and the private sector. The GCM is clustered into roundtable discussions grouping the objectives with a focus on how they contribute to safe, orderly and regular migration. Rapporteurs are appointed to report to the intergovernmental review forum.

IMRF

Every four years, under the auspices of the UN General Assembly, an International Migration Review Forum (IMRF) is held to deliberate on the progress, share lessons and discuss gaps in GCM implementation across the 23 objectives and all regions. This intergovernmental global platform is preceded by a full-day Multi-Stakeholder Hearing. The UN Secretary-General issues a Progress Declaration, then set for adoption by Member States, to mark the end of the IMRF and highlight key headlines of progress aiming to guide States in committing further to implementation.



Multistakeholder Meeting before the 2025 RMRF for Latin America and the Caribbean. Santiago de Chile, 2025.

TRACKING PROGRESS – TOWARDS ROBUST MEASUREMENT OF GCM IMPACT

In paragraph 70 of the Progress Declaration of IMRF, the UN Migration Network was tasked “to propose, for the consideration of Member States, a limited set of indicators, drawing on the global indicator framework for the Sustainable Development Goals and targets of the 2030 Agenda as contained in General Assembly resolution 71/313 of 6 July 2017 and other relevant frameworks, to assist Member States, upon their request, in conducting inclusive reviews of progress related to the implementation of the Global Compact”. This work was done by establishing a workstream. Following an [extensive process](#) with mapping exercise, survey feedback, technical briefings with Member States, bilateral engagement and roundtable discussions run by the workstream members, a proposal for a limited set of indicators has been brought forward for due approval. The work stream includes civil society organisations, trade unions and diaspora actors.

ACTION: How can local state actors engage globally?

1. **Connect locally:** Find out about the national review process and propose your inputs.
2. **Connect regionally:** Find out about regional consultative processes for jointly written submissions (online) to the UNNM secretariat.
3. **Be informed:** Sign up for newsletters from the UN Migration Network, GFMD Mayors’ Mechanism on schedules, registration and information on Member State information and consultation sessions.
4. **Be supportive:** Share information with local partners in civil society and encourage their participation in the review process.
5. **Focus on impact:** Advocate for GCM indicators endorsement and participate in assessment work.

ACTION: How can civil society engage globally?

1. **Connect locally:** Find out about the national review process and propose your inputs through shadow reporting.
2. **Connect regionally:** Find out about civil society preparation for joint advocacy.
3. **Be informed:** Sign up for newsletters from the UN Migration network, regional network, and Action Committee on review schedule, registration and information on consultations.
4. **Collective action:** Propose and share joint online submissions to the UNNM (e.g. comments on SG reports, shadow reports).
5. **Be prepared:** Engage ahead of time to avoid missing deadlines.
6. **Engage your voice:** Volunteer for rapporteur and speaker roles.
7. **Focus on impact:** Advocate for GCM indicators endorsement and participate in assessment work.

STAY CONNECTED – CONTACT DETAILS



Are you a civil society organisation wishing to stay connected on regional engagement on GFMD and GCM?

Civil Society contacts on GFMD and GCM engagement

Africa:

African Non-State Actors Platform on Migration and Development:
info@africanmigrationplatform.org

Asia-Pacific:

Migrant Forum in Asia (MFA):
mfa@mfasia.org

PACIFICWIN:
pefi.kingi@gmail.com

Europe:

African Foundation for Development (AFFORD):

info@afford-uk.org

Platform for International Cooperation on Undocumented Migrants (PICUM):

info@picum.org

Latin America and the Caribbean:

Alianza Americas:

info@alianzamericas.org

Bloque Latino Americano:

incidencia@cafami.org.mx

Middle East and North Africa:

Cross Regional Center for Refugees and Migrants (CCRM):

insan@insanlb.org

Global Civil Society:

GCM (Action Committee):

policy@icmc.org



Are you a national or local state authority wanting to stay connected on GFMD and GCM?

State Contacts on GFMD and GCM Engagement

GCM – UN Migration Network Secretariat:

unmignet@iom.int

GFMD Secretariat:

gfmd@iom.int

GFMD Mayors Mechanism:

info@mayorsmechanism.org

